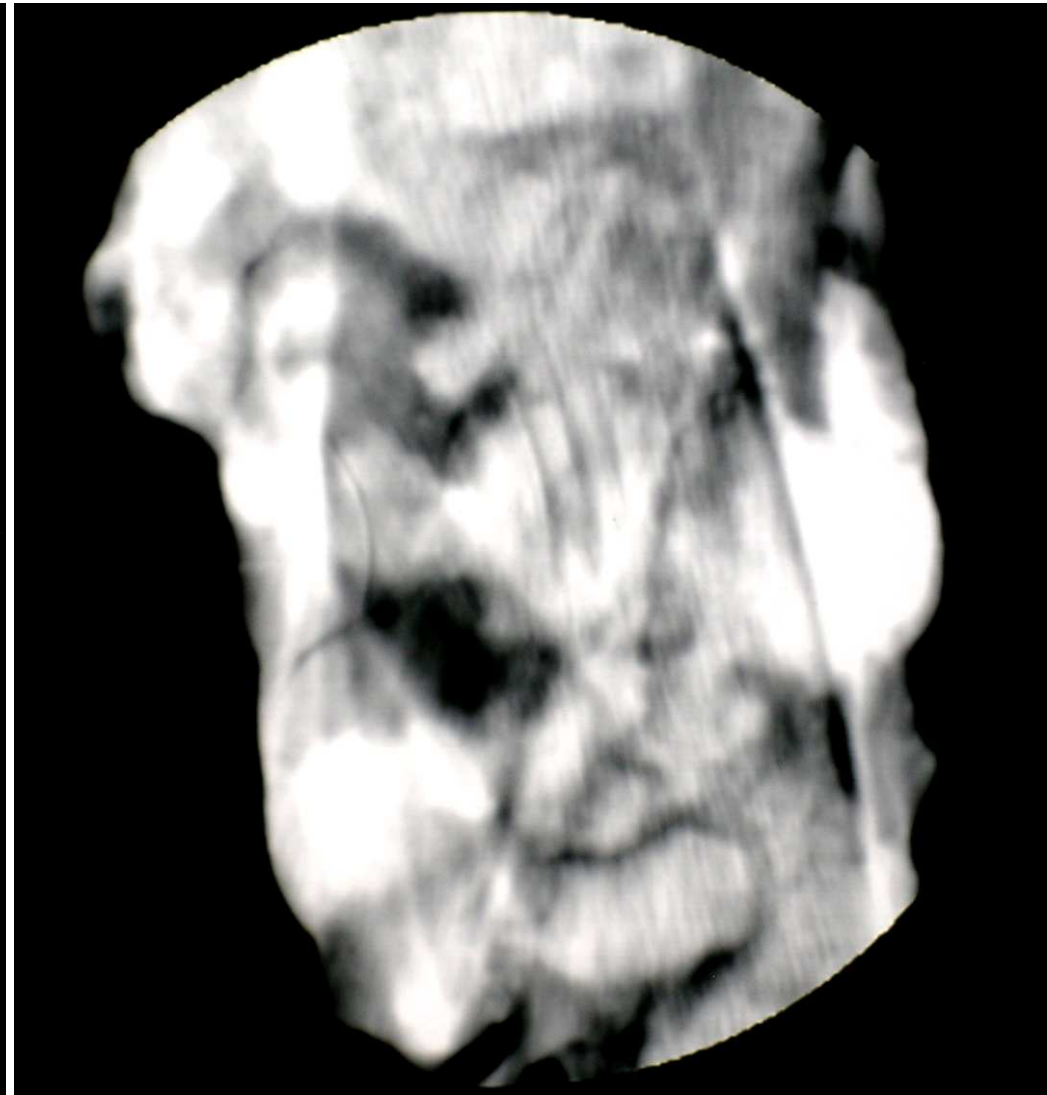
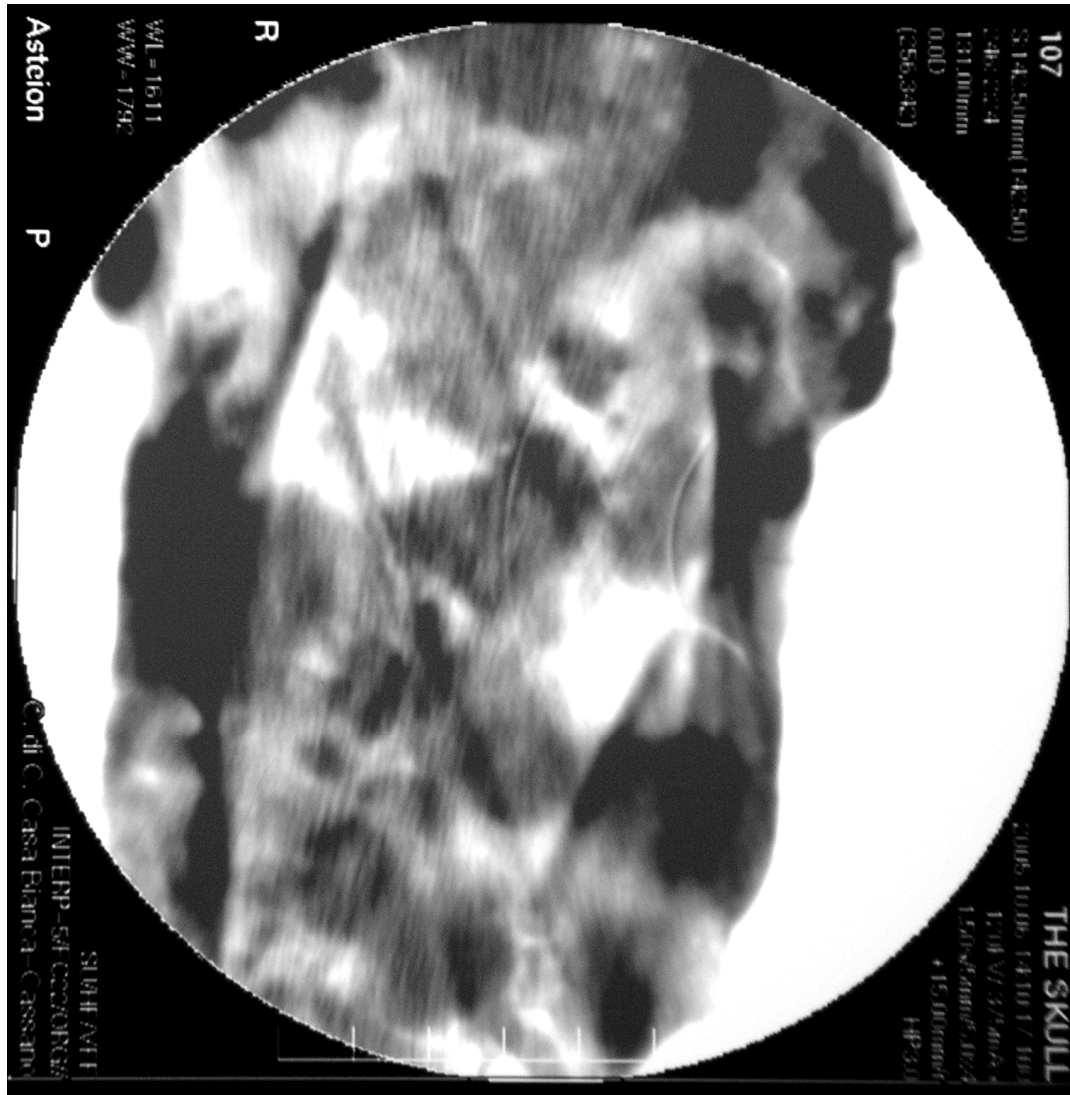


CT Tomography of mineralized SKULL *never studied and forgotted by the scientific community.*

CT Tomografia CRANIO mineralizzato
mai studiato e dimenticato dalla comunità scientifica.

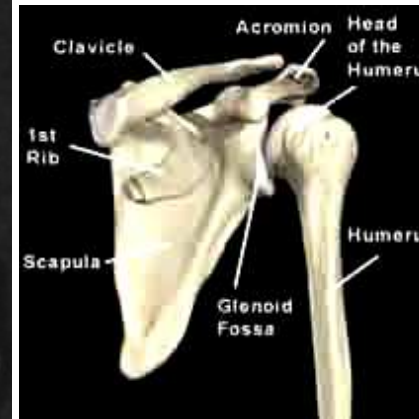
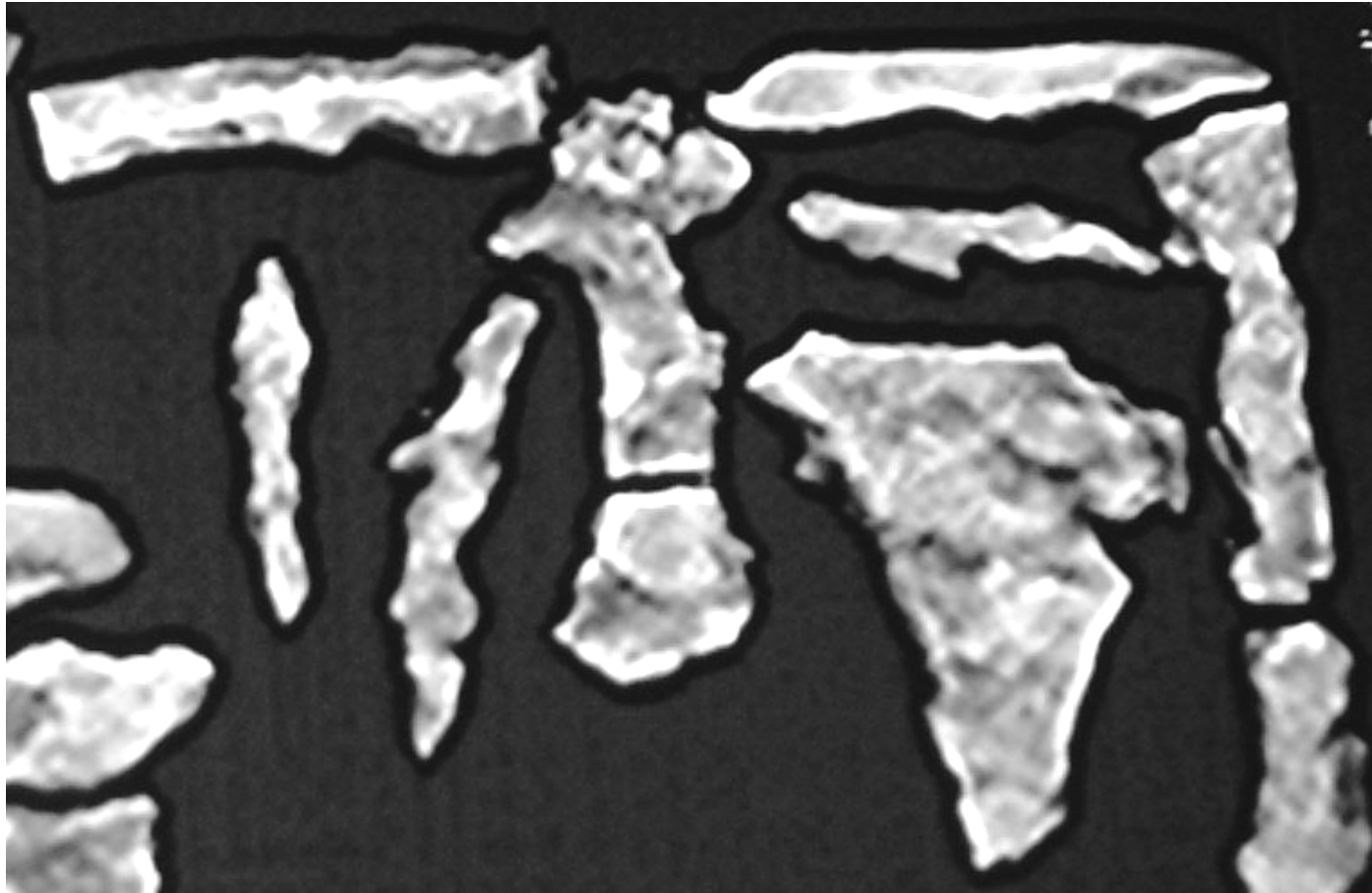




Computerized Tomography of petrified fossils

"Man of the Murge"

Tomografia computerizzata di fossili pietrificati "Uomo delle Murge"

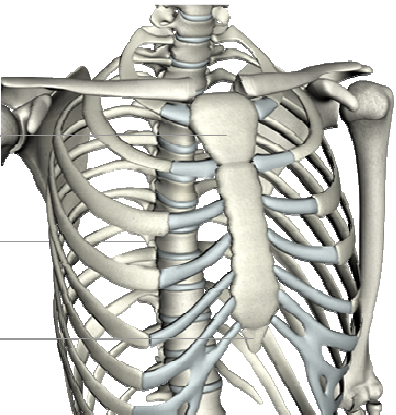


Sternum - Clavicle - Humerus - Scapula

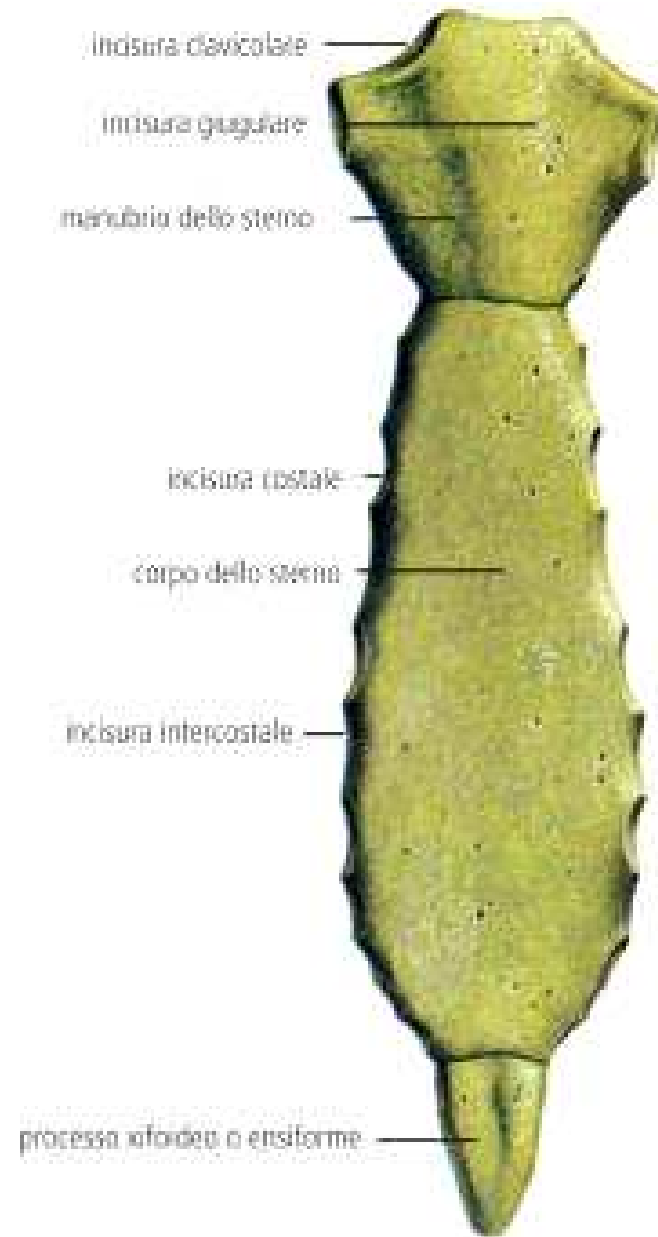
(we can see the image of the sternal wrongly inverted)

Sterno - Clavicola - Omero - Scapola

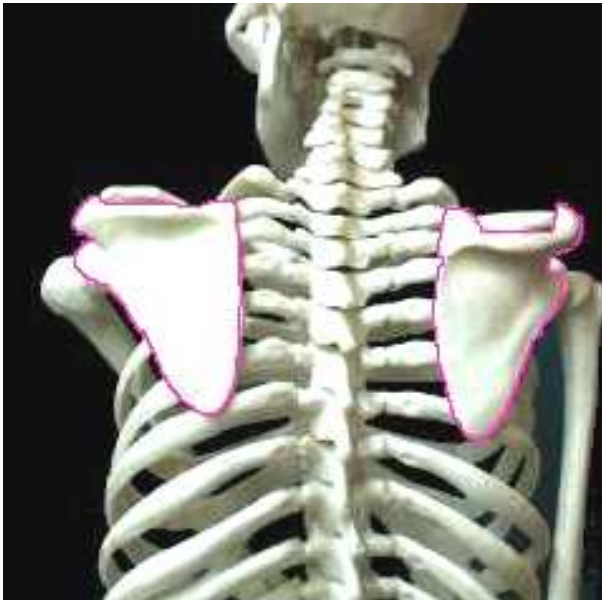
(nella tomografia l'immagine dello Sterno, erroneamente e capovolta)



On the left image Sternum fossil "Man of the Murge"
Immagine a sinistra Sterno fossile "Uomo delle Murge"



Petrified fossil's bones "Man of the Murge"
Ossa fossili petrificati "Uomo delle Murge"



Clavicle - Humerus - Scapula - Clavicola - Omero - Scapola

Fossil skeleton petrified "Man of the Murge"
Scheletro fossile pietrificato "Uomo delle Murge"



Lumbar vertebrae - Sacrum - Ilium - Tibia - Vertebre lombari - Osso sacro - Ileo - Tibia

Petrified fossil "Man of the Murge"
Fossile pietrificato "Uomo delle Murge"

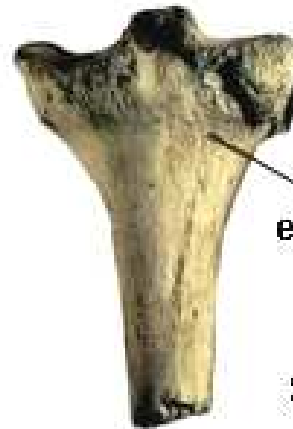


Bone sacred - Osso sacro

Tibia fossil petrified "Man of the Murge"
Tibia fossile pietrificata "Uomo delle Murge"



Anamensis

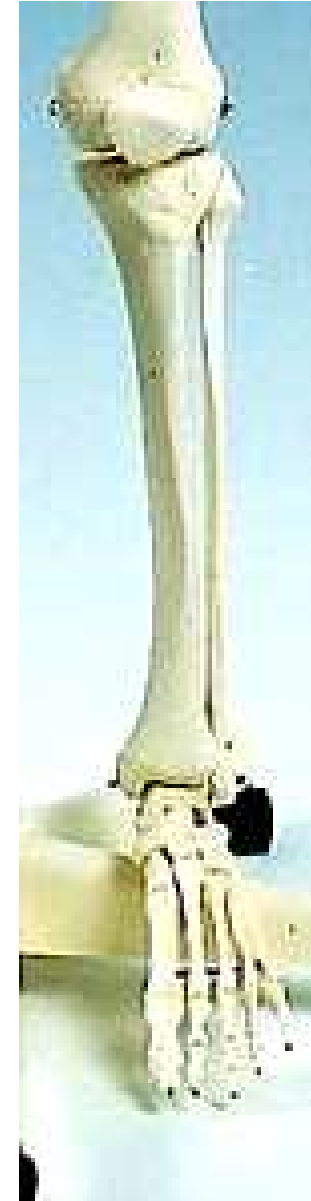


Human



Bone is wider near the knee to have extra spongy bone tissue

**Shock Absorber
Tibia**



Fossil petrified "Man of the Murge" - Fossili pietrificati "Uomo delle Murge"



Foot bones: Calcaneus - Cuboid - Metatarsal - Scaphoid
Ossa del piede: Calcagno - Cuboide - Metatarso - Scafoide

